

# Wrights



**Turntable Place**  
Westbury BA13 4GB

**Monthly Rental Of £1,350**



Wrights Residential, 24 Fore Street, Trowbridge, BA14 8ER  
Phone: 01225 755553, Email: [enquiries@wrightsresidential.co.uk](mailto:enquiries@wrightsresidential.co.uk)  
[www.wrightsresidential.co.uk](http://www.wrightsresidential.co.uk)

**Four bedroom detached property**

**Large kitchen/diner**

**Study**

**Four generous bedrooms with built in wardrobes**

**Situated within easy reach of Westbury railway station**

**Utility room**

**Downstairs cloakroom**

**En-suite to master bedroom**

**This spacious and well presented four bedroom detached property is situated on the outskirts of Westbury, within easy reach of the railway station. Features include a large kitchen/diner, utility room, spacious lounge, study, downstairs cloakroom, four generous bedrooms with built in wardrobes, en-suite to the master bedroom, enclosed rear garden with log cabin, garage and off road parking. Available mid April, unfurnished.**

**The property comprises**

**Ground Floor**

**Entrance Hall**

With tiled flooring, radiator and stairs to the first floor.

**Cloakroom**

With tiled flooring, close coupled W.C, pedestal hand basin, radiator and storage cupboard under the stairs.

**Study** *9' 3" x 7' 4" (2.81m x 2.24m)*

With tiled flooring, radiator and PVCu double glazed window to the front.

**Lounge** *17' 8" x 12' 3" (5.38m x 3.73m)*

With tiled flooring, two radiators and PVCu double glazed bay window to the front.

**Kitchen/Diner** *14' 0" x 20' 6" (4.26m x 6.24m) max*

With tiled flooring, a range of eye level and base units, worktops with upstands, integrated eye level double oven, 6 ring gas hob with extractor hood over, American style fridge/freezer, space for dishwasher, one and a half bowl sink/drain, radiator, PVCu double glazed windows to the rear and PVCu french doors opening onto the rear garden.

**Utility room**

With tiled flooring, a range of eye level and base units, worktops with upstands, cupboard housing gas boiler, space for washing machine and tumble dryer, radiator, extractor fan and back door opening onto the rear garden.

**First Floor**

**Landing**

With wood laminate flooring, radiator, airing cupboard housing pressurised hot water cylinder and PVCu double glazed window to the side.

**Bedroom 1** *13' 4" x 12' 10" (4.06m x 3.91m)*

With wood laminate flooring, two built in wardrobes, radiator and PVCu double glazed window to the front.

**En-suite**

With wood laminate flooring, white suite comprising double shower enclosure, close coupled W.C and pedestal hand basin, heated towel rail, extractor fan and obscured PVCu double glazed window to the side.

**Bedroom 2** *12' 5" x 10' 4" (3.78m x 3.15m)*

With wood laminate flooring, radiator, built in wardrobe and two PVCu double glazed windows to the rear.

**Bedroom 3** *13' 4" x 9' 6" (4.07m x 2.90m) max*

With wood laminate flooring, radiator, built in wardrobe and two PVCu double glazed windows to the front.

**Bedroom 4** *10' 2" x 7' 6" (3.11m x 2.28m)*

With wood laminate flooring, radiator, built in wardrobe and PVCu double glazed window to the rear.

**Bathroom**

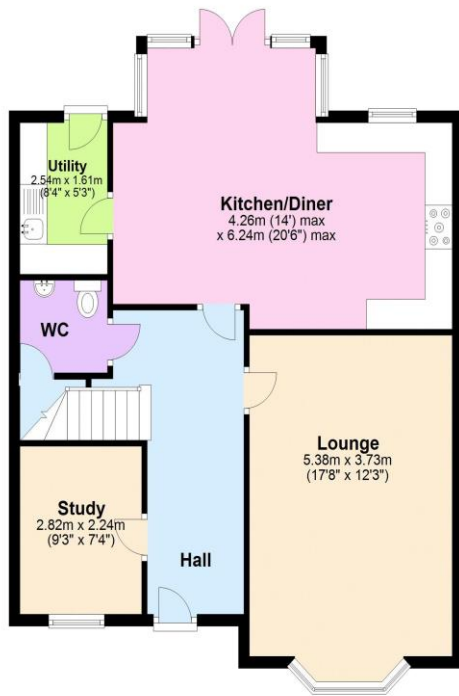
With wood laminate flooring, four piece suite comprising bath, shower enclosure with mains shower, pedestal hand basin, close coupled W.C, heated towel rail, extractor fan and obscured PVCu double glazed window to the rear.





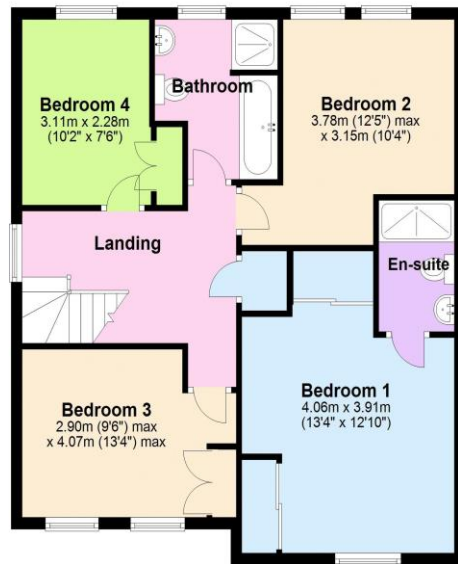
### Ground Floor

Approx. 72.2 sq. metres (777.7 sq. feet)



### First Floor

Approx. 68.9 sq. metres (741.5 sq. feet)



Total area: approx. 141.1 sq. metres (1519.1 sq. feet)